

July 1, 2024

Tokyu Land Corporation

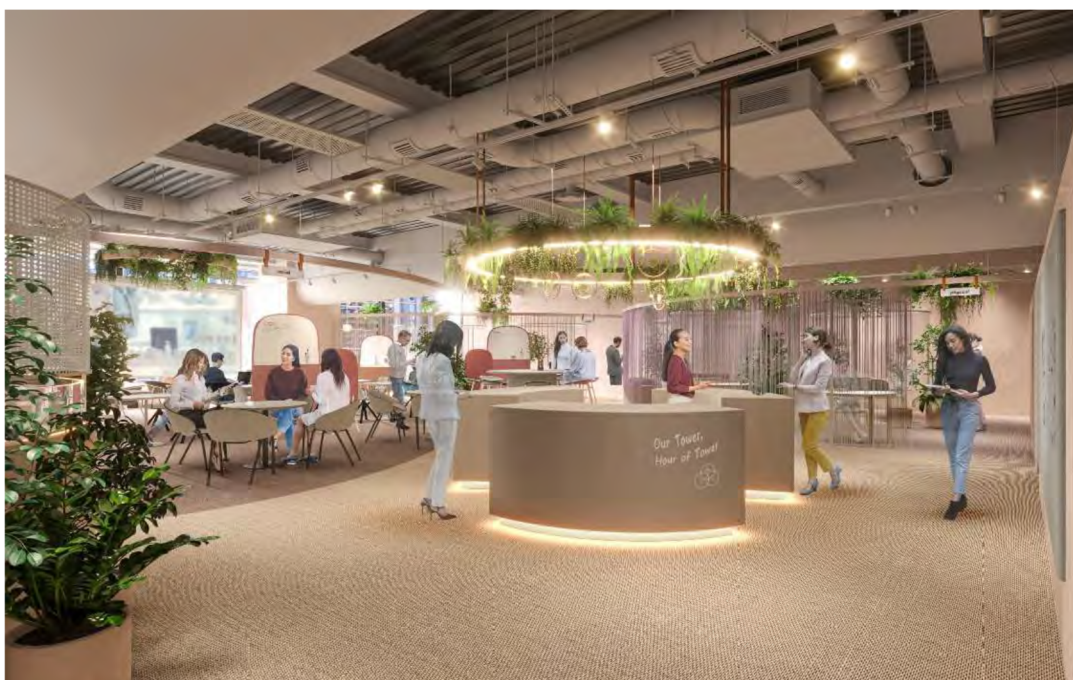
## Floor Supporting Worker Well-being, Proposed by Tokyu Land, Opens on Shibuya Sakura Stage 7F

Entrepreneur Support Facility and International Medical Facility Opening July 25, 2024

Tokyu Land Corporation (Headquarters: Shibuya-ku, Tokyo; President & CEO: Hiroaki Hoshino; "Tokyu Land" below) will open two facilities on the 7th floor of Shibuya Tower at Shibuya Sakura Stage on July 25, 2024: Business Airport Shibuya Sakura Stage, a members-only shared office as a facility to support entrepreneurs, and Shibuya Well Center, an international medical facility to support well-being.

The spatial concept at Business Airport Shibuya Sakura Stage is "Be in Shape - Stay Healthy." It provides a worker-friendly environment, with furniture carefully selected with health in mind. To Clinic Shibuya, located at Shibuya Well Center, is a clinic that welcomes non-Japanese patients.\*<sup>1</sup> Hour of Tower is a workers' lounge where the theme is well-being. This facility offers opportunities for workers to mind their mental and physical health through events in collaboration with companies and universities.

Note 1: Translation devices and other tools used to facilitate communication



Shibuya Well-Being (artist's conception)

■ Entrepreneurship support facility Business Airport Shibuya Sakura Stage



Located adjacent to Shibuya Station, one of Japan's major terminal stations, and with good access to Daikanyama and Ebisu, Shibuya Sakura Stage was created by developing a site of approximately 2.6 hectares in the Sakuragaoka area as a single property. It consists of the Shibuya Side (Shibuya Tower and Central Building) and the Sakura Side (Sakura Terrace and Sakura Tower).

Business Airport, a members-only shared office space developed by Tokyu Land Corporation, provides a business support concierge service for members at all locations and offers quality workspaces with a different interior design that suits each location. This facility is the sixth Business Airport in the Greater Shibuya Area,<sup>\*2</sup> providing a comfortable, pleasant space suited to a work environment.

To combine cutting-edge technology and knowledge with Shibuya's creativity and content, the facility will also organize industry-academia exchanges and collaborations with universities (Keio University Graduate School of Media Design and Denshi Gakuen iU Professional University of Information Management for Innovation) for startup companies and other businesses that have moved into Shibuya Sakura Stage.

Note 2: The Greater Shibuya Area is within a 2.5 km radius from Shibuya Station, as defined in the Tokyu Group's Shibuya urban development strategy.



Business Airport Shibuya Sakura Stage (artist's conception)



Adjacent lounge (artist's conception)

■ International medical facility Shibuya Well Center

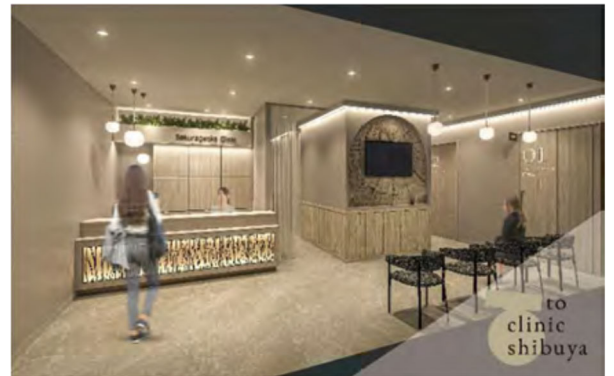
Shibuya Well Center, which consists of a clinic and a workers' lounge, provides Shibuya's workers with opportunities to receive preventive medicine and to mind their mental and physical health based on familiar themes. And in collaboration with the University of Tokyo's Institute of Medical Science, Shibuya Well Center also functions as a place to publicize state-of-the-art medical care and health information through lectures and other events on the latest in medical care.



(1) Aube's To Clinic Shibuya

The clinic provides various medical services for mental and physical health according to a concept of making Japanese businesspeople happy.

While playing a central role in society, the clinic supports middle-aged people in their 30s to 50s, a generation prone to the physical and mental burdens of aging, by providing not only insurance-covered internal medicine and urological care, but also specialized anti-aging care, men's health outpatient services (male menopause), and cosmetic dermatology services to counter aging in appearance. These services allow patients to continue performing at their best day in and day out.



To Clinic Shibuya (artist's conception of reception desk)

Medical Services

- internal medicine, urology, dermatology
- Outpatient specialties: men's health outpatient care (male menopause), cosmetic dermatology, sleep disorder care (SAS), outpatient vaccinations (HPV, pneumococcus, herpes, etc.)

Hours

- Weekdays: 11:00 – 20:00 (closed Tue & Wed)
- Weekends and holidays: 10:00 – 19:00



About Clinic Director Mark Soshi

Graduated from the Kyorin University Faculty of Medicine

Qualifications: certified urologist by the Japanese Urological Association, specialist in anti-aging medicine, certified testosterone treatment physician

Affiliations: Japanese Urological Association, Japanese Society for Dialysis Therapy, Japanese Society for Sexual Medicine, Japanese Society of Anti-Aging Medicine, Japanese Society of Men's Health, Japan Society of Ultrasonics in Medicine, Japanese Society of Sleep Research, Society of Aesthetic Dermatology

(2) Hour of tower, a worker's lounge for creating well-being with companies

◆ An interactive community space through company co-creation

Hour of Tower, a free workers' lounge available from 10:00 to 20:00 on weekdays,\*3 will open in Shibuya Well Center. Story & Co. (Headquarters: Chiyoda-ku, Tokyo; CEO: Tac Hosokawa) will operate the lounge. Companies with connections in healthcare and well-being will act as sponsors to provide visitors with opportunities to mind their mental and physical health through interactive events, as well as the provision and exhibition of products such as instruments for measuring physical condition, aroma products that regulate physical and mental condition, and devices for beautification and reducing fatigue.

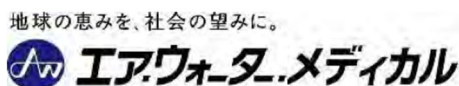
In addition to lounge access, beginning at 18:00, members can enjoy company-sponsored wellness events designed to provide a place to find their own personal time. Members may also plan their own well-being events. The goal is to support well-being through diverse content and to foster community.

# タワーのアワー HOUR OF TOWER

Note 3: Some areas for members only. Free areas are available regardless of place of residence or employment.

Hour of Tower official website (Japanese): <https://www.towernohour.andstory.co/>

## Corporate Sponsor Logos



### ■ Green Work Style, a Tokyu Land proposition

Companies face a wide range of issues, including health and productivity management and addressing employees' mental and physical health. Tokyu Land proposes new working lifestyles compatible with diverse perspectives, including the workplace, the environment, health and productivity management, and lifestyles, under the concept of "Green Work Style" in order to increase the corporate value of the companies renting space in our office buildings and to improve the well-being of their workers.

By providing medical facilities and a workers' lounge for Shibuya Sakura Stage workers, as well as for workers and visitors to Shibuya and the surrounding area, we will provide people leading busy everyday lives an environment that supports mental and physical health, as well as opportunities such as well-being events.



### ■ Project Life Land Shibuya, a Tokyu Land initiative in the Greater Shibuya Area

Project Life Land Shibuya is a Tokyu Land project in the Shibuya area based on the concept of "starting with people." Through co-creation with diverse people and companies, along with the creation of mechanisms and places for interaction, we will create a cycle of creation, dissemination, and accumulation, and we will build partnerships and alliances with people and companies who share our vision.

The Company plans to launch projects in the Shibuya Sakuragaoka, Harajuku/Jingumae, Daikanyama, and Yoyogi Park areas by fiscal 2024. Taking a long-term view, we will enhance the city's appeal by linking areas in the Greater Shibuya Area.



Project Life Land Shibuya

Website (Japanese): <https://life-land-shibuya.com>



■ Facility Overview: Shibuya Sakura Stage

Name	Shibuya Sakura Stage		
Operator	Shibuya Sakuragaoka Block Urban Redevelopment Association		
Address	1-1 Sakuragaoka-cho, Shibuya-ku, Tokyo (and elsewhere)		
Land Area	~2.6 ha		
Completion	November 2023		May 2020
Districts	Shibuya Side (District A)	Sakura Side (District B)	Nakashibuya Church (District C)
Primary Use	offices, stores, parking, etc.	housing, offices, stores, serviced apartments, parking, etc.	church, etc.
Floor Space	~184,700 m <sup>2</sup>	~69,100 m <sup>2</sup>	~820 m <sup>2</sup>
Floors	39 floors above ground (Shibuya Tower) 17 floors above ground (Central Building) 4 floors below ground	30 floors above ground, 1 floor below ground (Sakura Tower)	4 floors above ground
Height	~179 m (Shibuya Tower) ~90 m (Central Building)	~127 m (Sakura Tower)	~16 m